

H.264 Hardware Compression DVR



ADH Series Professional Digital Video/Audio Recorder

Main Features:

H.264 Baseline Profile video compression/decompression

Up to 16 CH Color and/or B/W Camera Input/Loop-out

**Recording capability up to 60/50 IPS / Full D1
or 240/200 IPS / CIF resolution**

Recording Resolution up to 720*480 / 720*576 selectable

Recording Speed Adjustable for each channel

Real-time Live Display (30/25 IPS per channel)

Simultaneous record, live, playback, control, remote access

Bi-directional audio capabilities

PTZ control capabilities & RS422/485 keyboard control

Remote access via web browser or propriety software

Remote access through mobile phone or PDA

Support up to 64 windows (4 DVRs) in single I.E web browser

1 I/R remote controller can control up to 4 DVRs

Optional VGA output to support LCD/PC monitor usage

2 internal SATA HDDs (Up to 4 HDDs—optional)

Key Advantages:

Supreme Video Quality

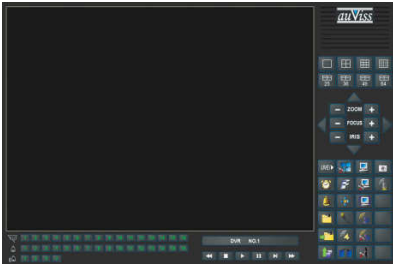
With latest V2.6 Embedded Linux O.S and Advanced **H.264 Baseline Profile** Hardware compression technology, ADH Series DVR is assure the highest level of recording/ playback video quality.

Compare to M-JPEG compression, ADH Series is saving storage space but remain the equivalent video quality with no compromise.



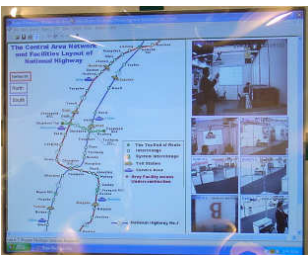
Powerful Remote Access Capability

Web browser (I.E/Firefox):



- One web browser allow connection of 4 AD/ADH Series DVR simultaneously and support up to 64 windows at same display screen.
- Multiple split windows can be selected including Full screen, quad, 9/16/25/36/49/64 windows.
- Remote record Live/playback video to your PC.
- Bi-directional audio supported
- Remote video back-up capability
- Live picture freeze
- Remote configuration
- Remote PTZ control/setup

Propriety CMS-9000 Series Software:



- Remote monitoring/control up to unlimited (CMS-9099) front end device (AD Series DVR)
- Customize your own layout of remote monitoring
- E. Map function to edit preferable display

User Friendly HMIs

For the HMI (Human Machine Interface), various ways can be choose as you like.

Main machine:

Multiplexer/VCR-like front panel keypad:



Easy to operate Jog/Shuttle:



Fast forward, rewind, search, pause.

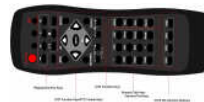
Menu setup

Independent PTZ Control Area:



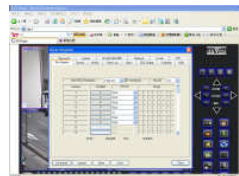
Pan/Tilt/Zoom control, preset....

IR Remote Controller:



One IR remote controller can control up to 4 DVRs separately with no interference (DVR can set ID1~4)

Remote Configuration:



All configurations can be done via I.E browser including camera setup, system, RS232/422/485, Network, Motion, HDD,..... (HDD format exceptional)

GUI for mouse operation:



The Graphic User Interface support mouse operation for easy setup and configuration.

Large Space of Storage Capability:

Two internal HDD allow up to 2TB storage capability Refer to 720*240 resolution, total 30IPS speed:

Highest Quality: 55.5 days

Lowest Quality: 428.75 days

IEEE1394 for external HDD Array (ABox400S). Each ABox400 can apply 4 HDDs up to total 4TB per array and total achieve 8TB for external HDD.

Highest Quality: 277.5 days

Lowest Quality: 2143.75 days

**SATA HDD can support more than 1TB depends on HDD makers.

SPECIFICATION

Video	Format	NTSC/EIA or PAL/CCIR
	Input	ADH216: 16CH , BNC, 1Vp-p/75ohm ADH209: 9CH , BNC, 1Vp-p/75ohm ADH104: 4CH , BNC, 1Vp-p/75ohm
	Main monitor	BNC x 1, S-video x 1 , 1Vp-p/75ohm (Optional VGA output)
	Main-AUX	BNC x 2 (Input x 1, Output x 1) , 1Vp-p/75ohm (Cascade)
	Call monitor	BNC x 1 , 1Vp-p/75ohm
	Call-AUX	BNC x 2 (Input x 1, Output x 1) , 1Vp-p/75ohm (Cascade)
	Loop-through	16/9/4-CH as Video Input, BNC, 1Vp-p/75ohm
	Loss detection	Yes
	Motion detection	Yes, with configurable detection area & sensitivity
Audio	Input	4 RCA-jack connectors
	Output	2 RCA-jack connectors
Record	Compression	H.264 Baseline Profile
	Speed (IPS) & Resolution	ADH216/209: NTSC/PAL 720*480/720*576: 60/50IPS , 720*240/720*288: 120/100IPS , 360*240/360*288: 240/200IPS ADH104: NTSC/PAL 720*480/720*576: 30/25IPS , 720*240/720*288: 60/50IPS , 360*240/360*288: 120/100IPS
	Watermark	Yes
	Mode	Manual/Schedule/Alarm/Motion
	Pre-record time	0 – 60 seconds
	Post-record time	0 - 60 minutes
Display	Resolution	NTSC – 720*480, PAL – 720*576
	Split windows	ADH216: 1/4//7/9/10/13/16 ADH209: 1/4/7/9 ADH104: 1/4
	Frame rate	Up to 30 (NTSC) / 25 (PAL) IPS per display window
	Digital Zoom	X2, x4
	Sequential switch	User adjustable
Playback	Speed (IPS) & Resolution	ADH216/209: NTSC/PAL 720*480/720*576: 60/50IPS , 720*240/720*288: 120/100IPS , 360*240/360*288: 240/200IPS ADH104: NTSC/PAL 720*480/720*576: 30/25IPS , 720*240/720*288: 60/50IPS , 360*240/360*288: 120/100IPS
	Search	Date/time, Camera, Alarm, & Motion
Storage	HDD	2 sets of 3.5" SATA HDDs
	HDD Extension	1 optional IEEE 1394 connector for up to 8 external HDDs (2 sets of ABox400S)
	Backup	2 USB 2.0 ports for USB 2.0 disk drives, DVD+RW, card readers, etc.
Alarm	Input	16 contact or TTL/CMOS signal, polarity selectable
	Output	2 Normally Open, 2 Normally Closed relay output
	Buzzer	Yes
	Triggered by	Sensor input, Video loss, & Motion
	Event log	Yes
Network	Ethernet	1 RJ-45 10/100BaseT Ethernet connector
	Web	Remote setup, monitoring, & alarm notification, 4 DVRs (64 windows) supported
	E-mail	Alarm notification to stationary or mobile devices
	Remote Access	PC, mobile phone or PDA
	Remote Users	Up to 8 users simultaneously
	FTP	Alarm video/audio file storage
	Protocol	TCP/IP, HTTP, PPPoE, DHCP, DDNS, FTP, TSP
Control	I/R	1 I/R remote controller to control up to 4 DVRs
	RS-232	1 D-type female connector for PTZ control
	RS-485 or RS-422	1 RJ-45 connector for keyboard control or PTZ control

SPECIFICATION

Setup	Local	On screen setup via keypad, I/R remote controller, and/or RS-485 keyboard
	Remote	Setup & upload via Windows application software
	Multi-lingual	Yes
Reliability	System recovery	Auto power on after power loss recovery
	Watch Dog Timer	Yes
	Timer	Built-in real time clock
	Dust filter	Industry-designed dust filter for harsh environments
	Security	Multi-level password protection with authentication key for remote access
Weights & Measures	Dimension & Weight	430(W) x 330(D) x 88(H)mm, 5.0 KG (without HDD)
Power	Source	90~264 VAC, 47~63 Hz
	Consumption	65W Max. (with 2 HDDs)
Operating Temperature		0°C ~ +45°C

Rear View of 16CH (ADH216):



Ordering Information:

ADH104	4Ch Real-time H.264 DVR, 120/100IPS (CIF), 60/50 (HD1), 30/25 (FD1)
ADH209	9Ch Real-time H.264 DVR, 240/200IPS (CIF), 120/100 (HD1), 60/50 (FD1)
ADH216	16Ch Virtual real-time H.264 , 240/200IPS (CIF), 120/100 (HD1), 60/50 (FD1)

Extension models:

ADH*-X:** with optional **IEEE1394** connection for ABox400S external HDD array.

ADH*-V:** with optional **VGA main monitor output**.

ADH*-VX:** with optional **IEEE1394 & VGA output**.

auViss Auviss Technology Co., Ltd

7F-1, No 240, Sec 2, Tatong Rd, Sijhih City, Taipei County, Taiwan
 Tel: +886 (2) 8691-9370
 Fax: +886 (2) 8691-9310
 Inquiry: marketing@auviss.com
 Website: www.auviss.com